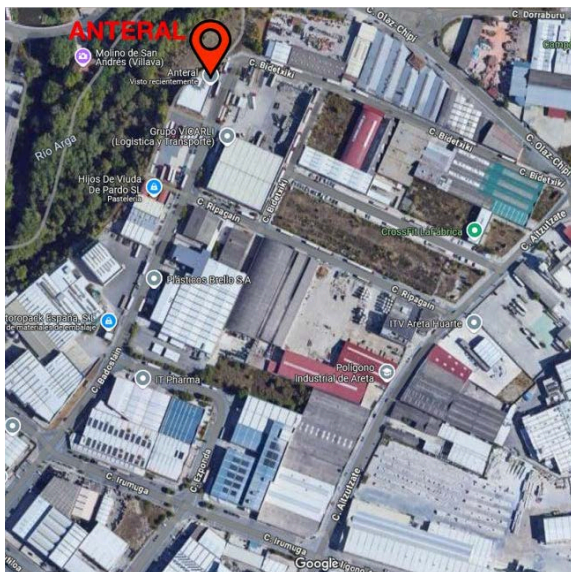
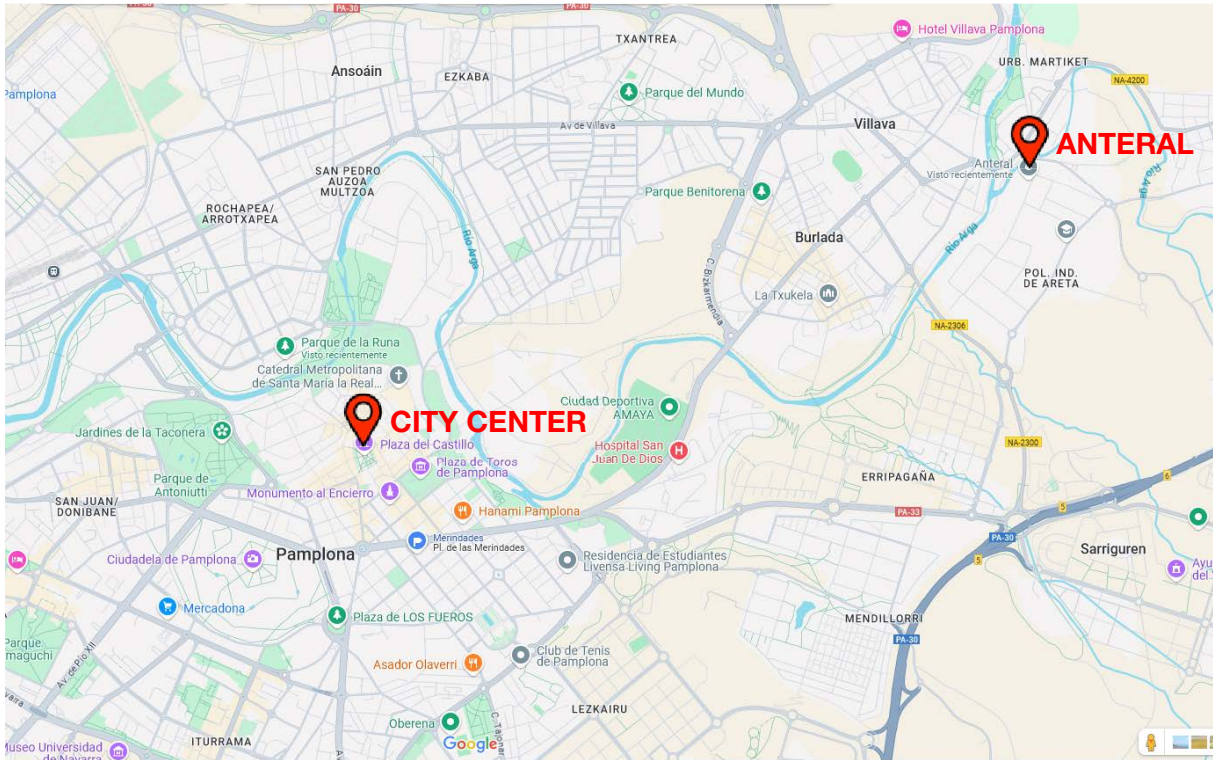


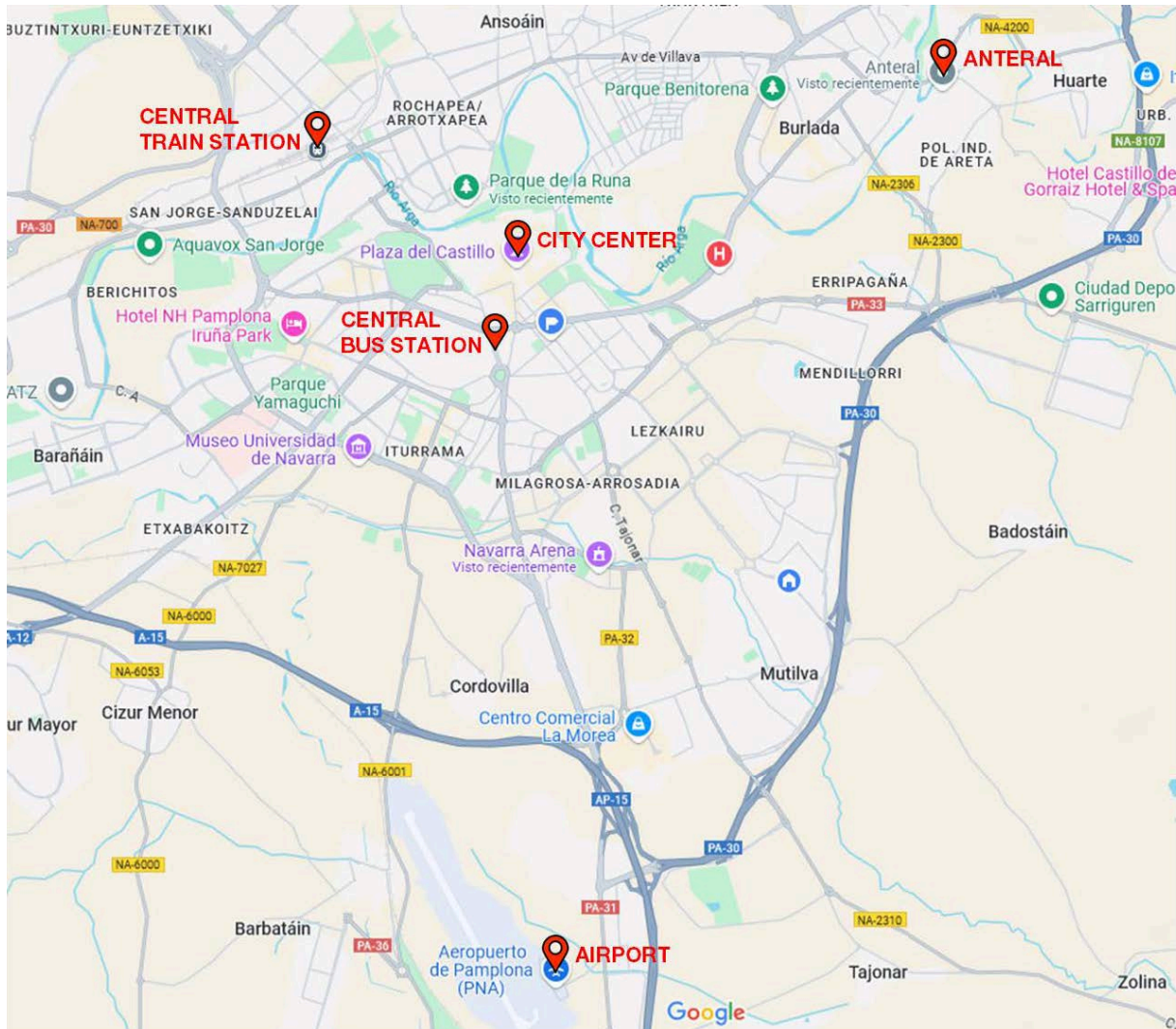
## VENUE

The meeting will take place at the Anteral offices, located on the outskirts of the city of Pamplona, specifically in the town of Huarte, about 5 km from the city center. The exact address is:

**Calle Badostain 2, 2nd floor, 31620 Huarte, Navarra, SPAIN.**



## ARRIVAL TO PAMPLONA



The most direct way to get to Pamplona is via the **airport**:

- <https://www.aena.es/en/pamplona.html>
- Address: Carretera del Aeropuerto, 31110 Noáin, Navarra

To go from the airport to the city center, you will need to take a taxi. There are usually taxis available at the airport. More information about taxis can be found at the following website:

- <https://www.mcp.es/transporte/taxi/como-solicitar-un-taxi>
- Mobile APP: <https://pidetaxi.es>

However, Pamplona airport is small and may not offer the best connections for your arrival.

The nearby city of **Bilbao** has an airport with many more connections:

- <https://www.aena.es/en/bilbao.html>

Other nearby cities with airports include **Vitoria** and **San Sebastián**.

If you land in another city, you can reach Pamplona by train or bus, arriving at the respective central station.

### Central train station:

- Address: Plaza de la Estación, 31012 Pamplona, Navarra.

In Spain, trains are managed by a single public company, Renfe:

- <https://www.renfe.com/es/en>

### Central bus station

- Address: Calle Yanguas y Miranda, 2, 31003 Pamplona, Navarra.

As for buses, there are multiple companies. One of the ones that offers the most connections to Pamplona is Alsa:

- <https://www.alsa.com/en/web/bus/home>

### Rental car

Another option is to rent a car at a nearby city airport and drive to Pamplona. It takes 2 hours from Bilbao and 1 hour from Vitoria or San Sebastián. There are many parking lots in Pamplona where you can park the car long-term, and many hotels also offer private parking.

## ARRIVAL TO ANTERAL

To get to Anteral from the city center, we recommend two options:

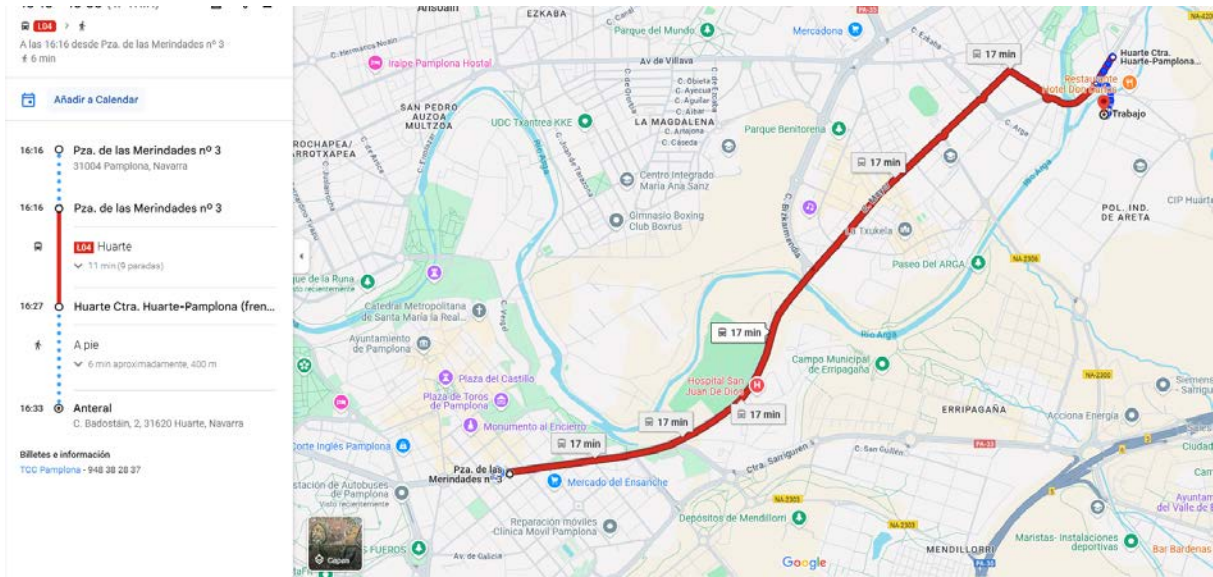
### Taxi

This is the fastest option. It takes about 10 minutes from the city center. You can find information about Pamplona taxis on the following page.

- <https://www.mcp.es/transporte/taxi/como-solicitar-un-taxi>
- APP: <https://pidetaxi.es>

### Local transport

Pamplona's local transport consists of buses. The line that goes to Anteral is line 4. There are two variations of line 4: L4H (Huarte) and L4V (Villava). It is preferable to **take L4H** as the closest stop is a 6-minute walk (400 m) from Anteral. The L4H line runs approximately every 15 minutes. From the central stop 'Plaza de las Merindades,' it takes about 20 to 25 minutes to reach Anteral. The bus ticket can be purchased directly on the bus, paying with cash or card (1.6€).



### Rental car

At Anteral, there is free parking available. There is a small private parking lot that is free, and in the nearby streets, parking is also free and usually has available spaces. If you arrive with your own car, please let Anteral contacts know in advance so we can reserve a space in the private parking

## **OTHER USEFUL INFORMATION**

### **Weather**

In Pamplona, January weather is typically cold, ranging from 1° to 10°. It also rains frequently during the winter months.

### **Contacts**

Victor Torres, +34 948 488458, [vtorres@anteral.com](mailto:vtorres@anteral.com).

Itziar Maestrojuan, +34 948 488458, [imaestrojuan@anteral.com](mailto:imaestrojuan@anteral.com).